

i m p r e s s i o n s e x p o

Applique Embroidery Secrets



APPLIQUE • JOE

Joe Kramar • @appliquejoe

impressionsexpo.com

Overview

- **Understanding the basics of setting up a file for applique.**
- **Utilizing embroidery software to create applique designs.**
- **Choosing the best Applique fabric for your project.**
- **Interfacing/Backing basics for applique styles.**

Preparing for Applique

It's all about setting your line tolerances from the start.



APPLIQUE • JOE

Joe Kramar • @appliquejoe

impressions expo

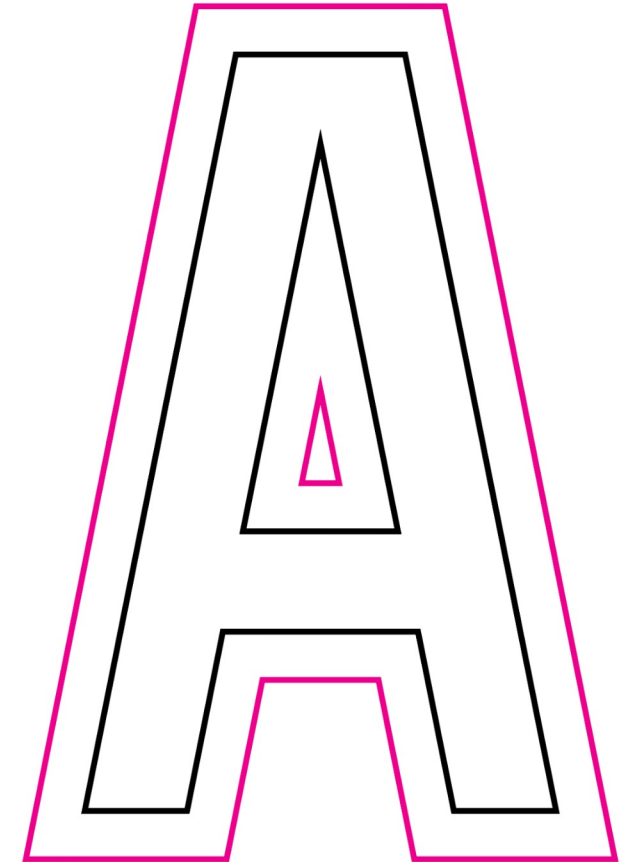
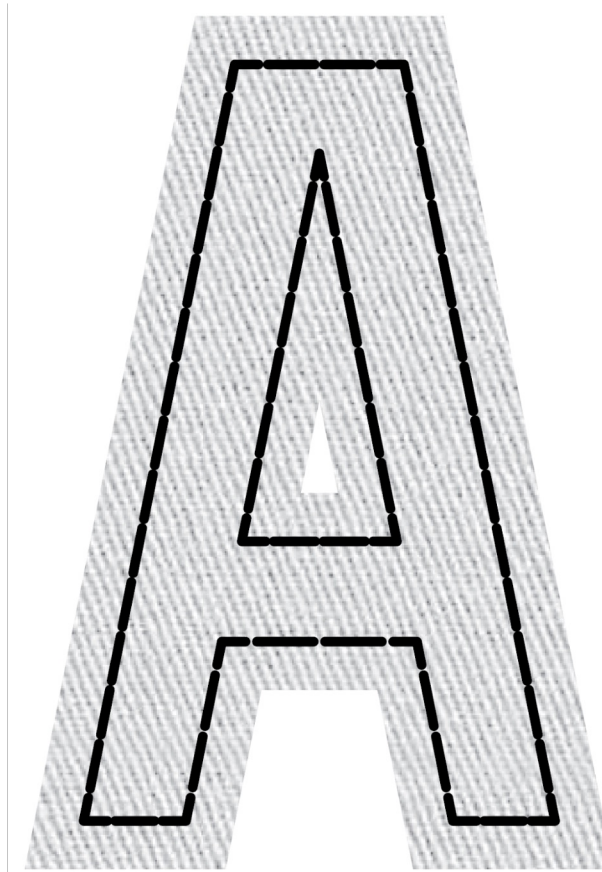
#impressionsexpo

Setting up a File for Applique

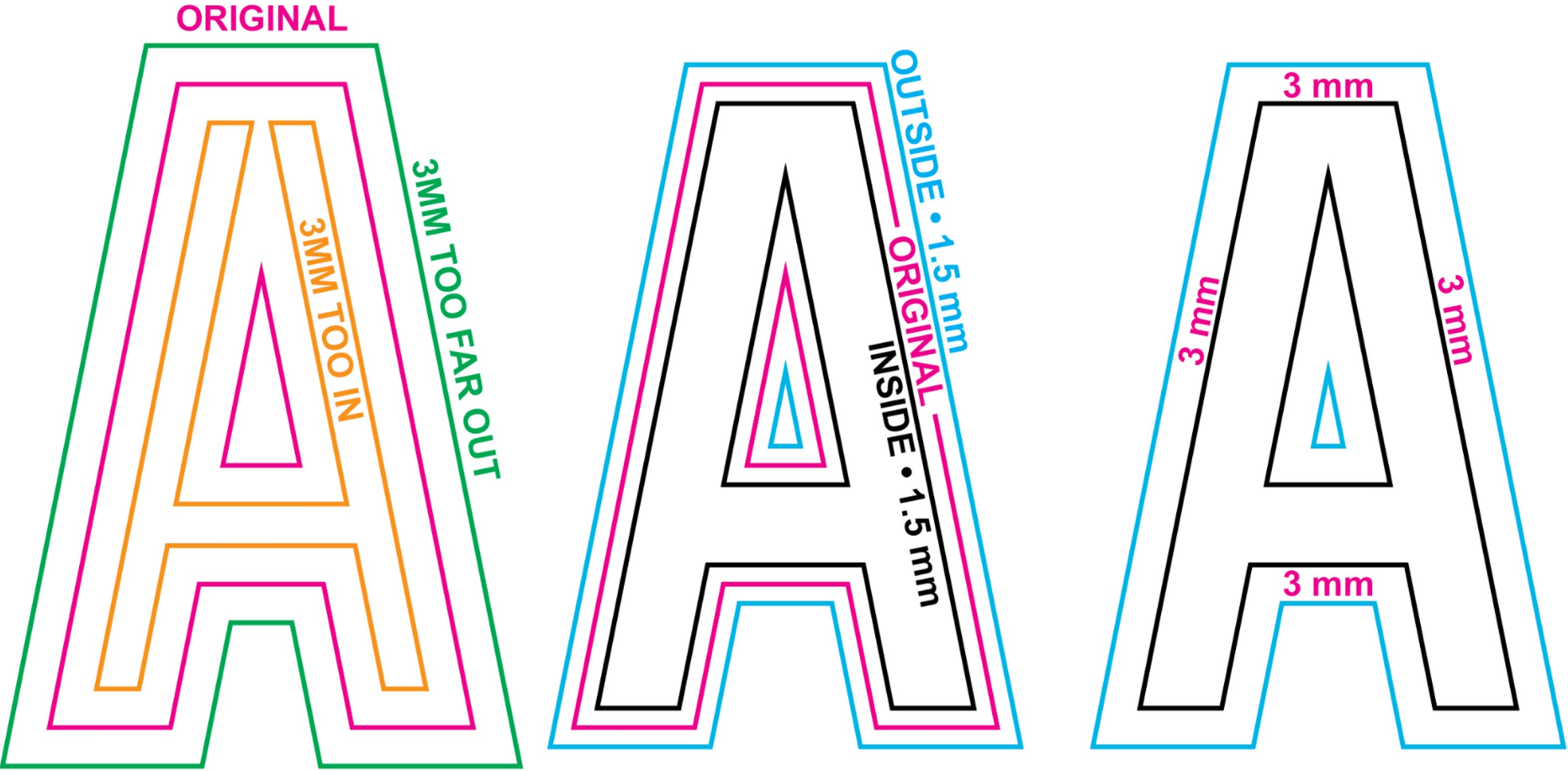
Use the 3mm tolerance rule.

If you can't move the outlines out, move the inlines in.

If it's too small for those lines, just direct embroider it.



Move the outside out & the inside in.



3mm + Tolerance

Either in your digitizing program or your vector program, be sure to keep to the 3mm rule.

Any less, and you'll gamble with human analog placement. In other words, any less and the embroidery operator will not place the applique efficiently.

If you simply expand to the outside, you can end up losing the detail.



Precut Applique

Precut applique requires you to draw the item after scanning it in. This will allow the artist to set the show, tack and lastly add the decoration stitch. Be sure to scan it in at scale so your stitches will match up.

Stick to the 3mm offset tolerance and you'll be just fine.



Applique Fabric Options

Which fabric works best and in what scenario?



APPLIQUE • JOE

Joe Kramar • @appliquejoe

impressions expo

#impressionsexpo

Organic Fabric

Cotton and similar natural fabrics should be chosen for frayed edges, twill strings, dull finish, and natural colors.

Laser cutting doesn't affect the fray ability.

Best for vintage looks.

Cotton fabrics are readily available most forms.

Synthetic Fabric

Polyester and similar man made fibers should be chosen for the extreme durability, slight sheen texture and wide array of colors.

Polytwill has a street name of Tackle-Twill. Athletic related no doubt.

Must be either computer or laser cut. Laser cut will cinge the edges keeping the fabric from fraying.

Best for a clean look.

Blended Fabric

If it's blended, treat it like is synthetic. You can still maintain the sheen and look of organic fibers, but have the strength and longevity of a synthetic fabric.

Blended fabric are usually not a risky purchase so experiment away.

Organic Fabric



impressions expo

Synthetic Fabric



Blended Fabric



#impressionsexpo

Faux Chain Stitch



Joe Kramar • @appliquejoe

Displaying a “chain stitch machine” feel automated.

Faux Chain Stitch

Machine embroidery
version of a chain stitch
machine effect.

This is a coil or path offset
technique that utilizing an
arrow or triangle shape
motif focused down a given
path.



Off Set Patch or Coiling

Depending on the size of the motif or arrow shape, you want a 25% + overlap of the chain pattern for a proper fill density.

This video displays the method of off setting the path in Adobe Illustrator.



Survey

- Thank you for joining me today.
- Did you enjoy the session?
- What subjects or content would you like to learn more about in the future?
- Did you sign up for an advanced class & no idea what's been happening?



SCAN ME

Questions?



impressions expo

#impressionsexpo